

Amplifier for displacement sensor

FASTUS

CDA Series

CDA- □

Instruction manual

- Thank you for purchasing. We hope you are satisfied with its performance.
- Please read this manual carefully and keep it for future reference.

! Indicates a possible hazard that may result in death, serious injury, WARNINGS or serious property damage if the product is used without observing the stated instructions.

! **Warning Mandatory Requirements**

- This product is not an explosion proof construction. Do not use the product under flammable, explosive gas or liquid environment.
- Use of controls or adjustments or performance of procedures other than those specified herein may result in hazardous radiation exposure.
- Never use these products as sensing devices for personnel protection. Doing so could lead to serious injury or death. These sensors do not include the self-checking redundant circuitry necessary to allow their use in personnel safety applications. A sensor failure or malfunction can cause either an energized or de-energized sensor output condition. Please consult our distributors about safety products which meet OSHA, ANSI and IEC standards for personnel protection.

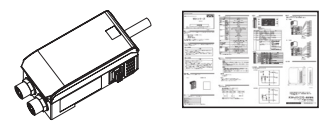
! **Warning Safety Precautions**

- It is dangerous to wire or attach/remove the connector while the power is on. Make sure to turn off the power before operation.
- Installing in the following places may result in malfunction:
 1. A dusty or steamy place
 2. A place generating corrosive gas
 3. A place directly receiving scattering water or oil.
 4. A place suffered from heavy vibration or impact.
- The product is not designed for outdoor use.
- Do not use the sensor in a transient state at power on (Approx. 15min. Warm up period)
- Do not wire with the high voltage cable or the power lines. Failure to do this will cause malfunction by induction or damage.
- Do not use the product in water.
- Operate within the rated range.
- Don't bend the cable when the temperature of the cable or atmosphere is below freezing.
- Wipe off dirt on the emitting/receiving parts to maintain correct detection. Also, avoid direct impact on the product.

Included items

Please confirm following items are included in the package.

- CDA- □
- This instruction manual



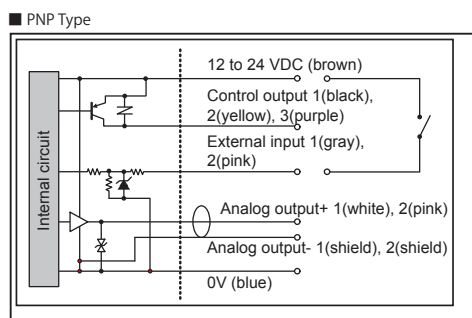
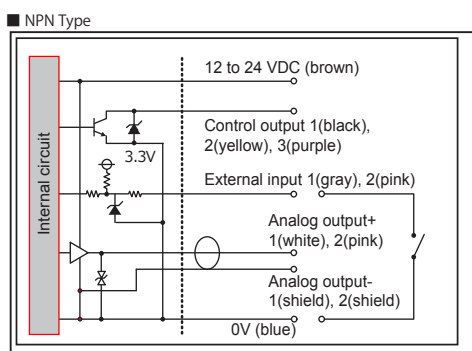
Specifications

Model	Master		Slave
	CDA-M	CDA-DM	CDA-S
Mounting	35mm DIN rail		
Sensor head	Max. number	2 units	
	Connector	M8, 4 pin connector	
Display	X, Y Pixels	X=128, Y=96 pixels	
	Indicator	Power indicator: Red / Green, Output indicator: Orange	
Analog Output	Current type:	4~20mA, Max. load resistance: 300Ω	
	Voltage type:	0~10V	
I/O	Ext. Input	2 inputs	2 inputs
	Control Output	3 NPN/PNP Open collector outputs, 30VDC 100mA Max. (Residual voltage 1.8V Max.)	
Communication I/F	RS-485 (Max. length 10m)		
Power supply	DC12~24V ± 10% (※)		
Current consumption	100mA Max./12VDC		
Protection circuit	Reverse connection protection		
Protection category	IP50		
Operating Temp/ Humid.	-20 ~ 50°C / 35 ~ 85% RH without freezing or condensation		
Storage Temp/ Humid.	-20 ~ 60°C / 35 ~ 85% RH without freezing or condensation		
Vibration resistance	10 ~ 55Hz, Double amplitude 1.5mm, X,Y,Z for 2 hours		
Shock resistance	500mm/s ² (approx. 50G), X,Y,Z 3 times each		
Material	PC		
Weight	170g		

(※) Power supply of slave (CDA-S) is provided by master

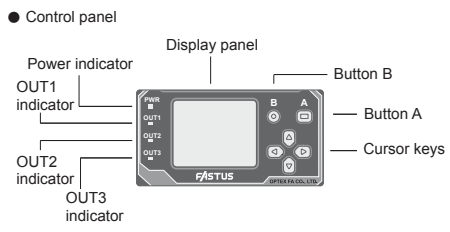
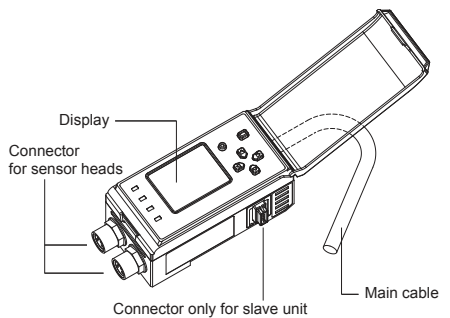
Connection diagram

You can switch between NPN and PNP for input and output interface by settings.



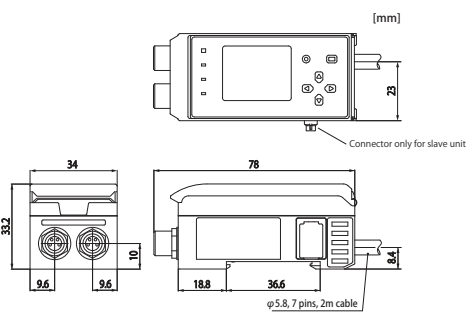
※ External inputs 1, 2 are only for CDA-M, CDA-S
※ Analog output 2 is only for CDA-DM

Names of parts



Indicator	Color	Description
Power indicator	Green or Red	Green ON: Running in normal mode Green blinking: Display is eco-mode Red ON: It has some Errors
Out 1 indicator	Orange	Orange ON: Output 1 is ON
Out 2 indicator	Orange	Orange ON: Output 2 is ON
Out 3 indicator	Orange	Orange ON: Output 3 is ON

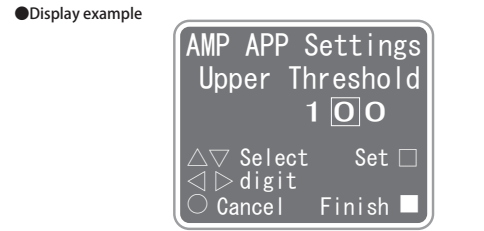
Dimensions



Functions of buttons

●Buttons

Shape	Name	On the display	Function
	Button A		Mainly "Set" by clicking
		Mainly "Finish" by pressing hold	
	Button B		Mainly "Cancel"
	Cursor Keys		Up/Down of parameter, Selecting parameter
			Selecting menu



* It will show Language selecting menu for the 1st time of power up. Select by the cursor keys \triangle/∇ , then set by button \square (button A).

Other functions

- Language selecting menu
To go to the Language selecting menu, power up while pressing hold the button \circ (button B).
- Key lock / Releasing lock
While the mode is Measurement mode or Measurement result display mode, by pressing the button \circ (button B) for more than 2 seconds, then buttons and keys will be locked. It will show "Key lock" at the bottom of the display.
From "Key lock" status, press hold the button \circ (button B) for more than 2 seconds, then it will release the buttons and keys.
- Specifications and equipment are subject to change without any prior notice.
- For more information, questions and comments regarding products, please contact us below.

→ http://www.optex-fa.com/rohs_cn/

Manufactured and sold by :

OPTEX FA CO.,LTD.

91 Chudoji-Awata-cho Shimogyo-ku Kyoto 600-8815 JAPAN
TEL : +81-(0)75-325-1314
FAX: +81-(0)75-325-2936
Website : <http://www.optex-fa.com>