

# Company Overview

OPTEX GROUP CO., LTD.



1. Company Overview
2. Business Domain
3. Sustainability

センサーで世界に貢献する オプテックスグループ

# 見えないものを、 見るしごと。



自動ドア用センサー      防犯用センサー      工場用センサー      画像検査用LED照明



**オプテックスグループ株式会社**  
(東証プライム上場:6914)

オプテックス株式会社 / オプテックス・エフエー株式会社 / シーシーエス株式会社 / サンリツオートメーション株式会社 / ミツテック株式会社 / オプテックス・エムエフジー株式会社 / 株式会社スリーエース / 技研トラステム株式会社 / 株式会社ジーニック / 東京光電子工業株式会社 / オーバルオプテックス株式会社

# 1. Company Overview

# 1. Company Overview

Company Name	OPTEX GROUP CO., LTD.
Location	Shiga Otsu, Japan
Established	May 25, 1979
Capital	2,798 million JPY
Sales	56,372 million JPY
Operating Profit	5,899 million JPY
Fiscal Year-End	December
Stock Code	Tokyo Stock Exchange Prime Market 6914
Consolidated Number of Employees	2,353

(Values: Results for the fiscal year ended December 31, 2023)

**The OPTEX Group  
is an integrated  
manufacturer of sensors.**

**To see things what eyes cannot see,  
that is our business !**

Meaning of the company name

**OPTEX**

OPTical TEchnology

**X (a Greek letter) as  
the symbol of the *unknown*  
and the *future***



# 1. Company Overview \_ History

- 1979** Established OPTeX CO., LTD.
- 1980** Developed the world's first Automatic Door Sensors with far-infrared.
- 1985** Founded a subsidiary in California, U.S.A.
- 1991** Made the company's stock public.
- 1996** Developed Outdoor Crime Prevention Sensors.
- 2001** Listed on the second section of the Tokyo Stock Exchange.
- 2002** Established OPTeX FA CO., LTD. as photoelectric sensor division.
- 2003** Listed on the First Section of the Tokyo Stock Exchange.
- 2005** Established a factory in China.
- 2016** Acquired 63.5% shares of CCS Inc.
- 2017** Acquired 100% ownership of OPTeX FA.  
Transitioned to a new organizational structure with OPTeX GROUP CO., LTD. as holding company.
- 2020** Acquired Sanritz Automation Co., Ltd.
- 2021** Acquired MITSUTeC CO., LTD.
- 2022** Transitioned to the Prime Market of the Tokyo Stock Exchange.



Founding members



Automatic door sensor



Outdoor security Sensor (1996)



Factory automation sensor developed by Optex FA



China: Home Plant (Dongguan City, Guangzhou)



LED lighting systems for image inspection

# 1. Holding Company Structure

SS Business: Sensing Solution Business  
 IA Business: Industrial Automation Business

Holding Company **OPTEX GROUP CO., LTD**  
 (Tokyo Stock Exchange Prime Market : #6914)

OPTEX CO., LTD.



Sales & Development of Sensors for security, automatic doors, etc.

**SS Business**

OPTEX FA CO., LTD.



Sales & Development of Sensors for Factory Automation

CCS Inc.



Sales, Development & Production of LED Lighting for Image Inspection

Sanritz Automation Co., Ltd.



Development, manufacturing and sales of industrial computers

MITSUTEC CO., LTD.



Development/manufacturing of automation systems and image processing inspection systems, etc.

**IA Business**

OPTEX MFG Co., Ltd.



Manufacture of the Group's products/equipment electronics manufacturing service

Three Ace Co., Ltd.



Development of various systems, applications, and digital contents

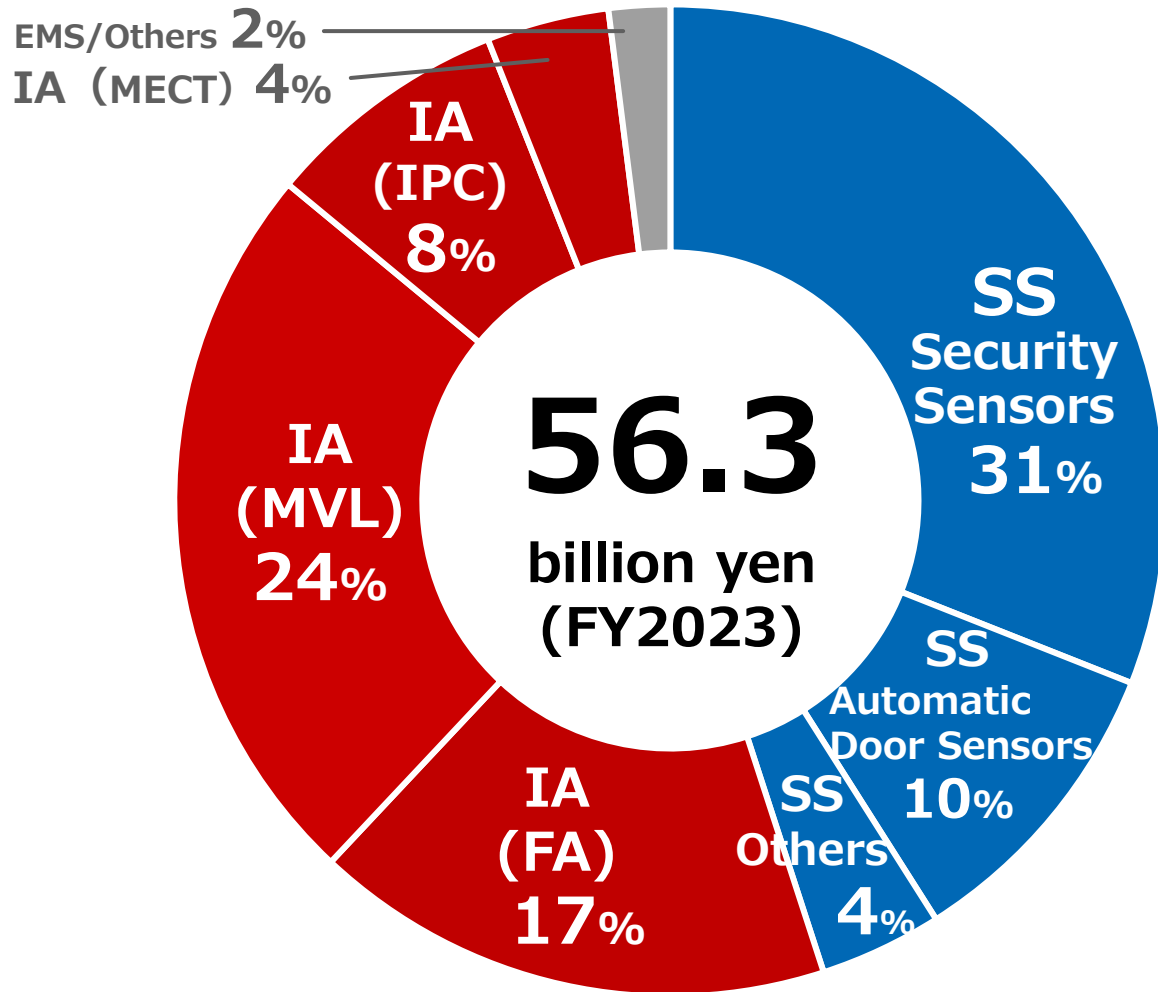
O'PAL OPTEX CO.,LTD.



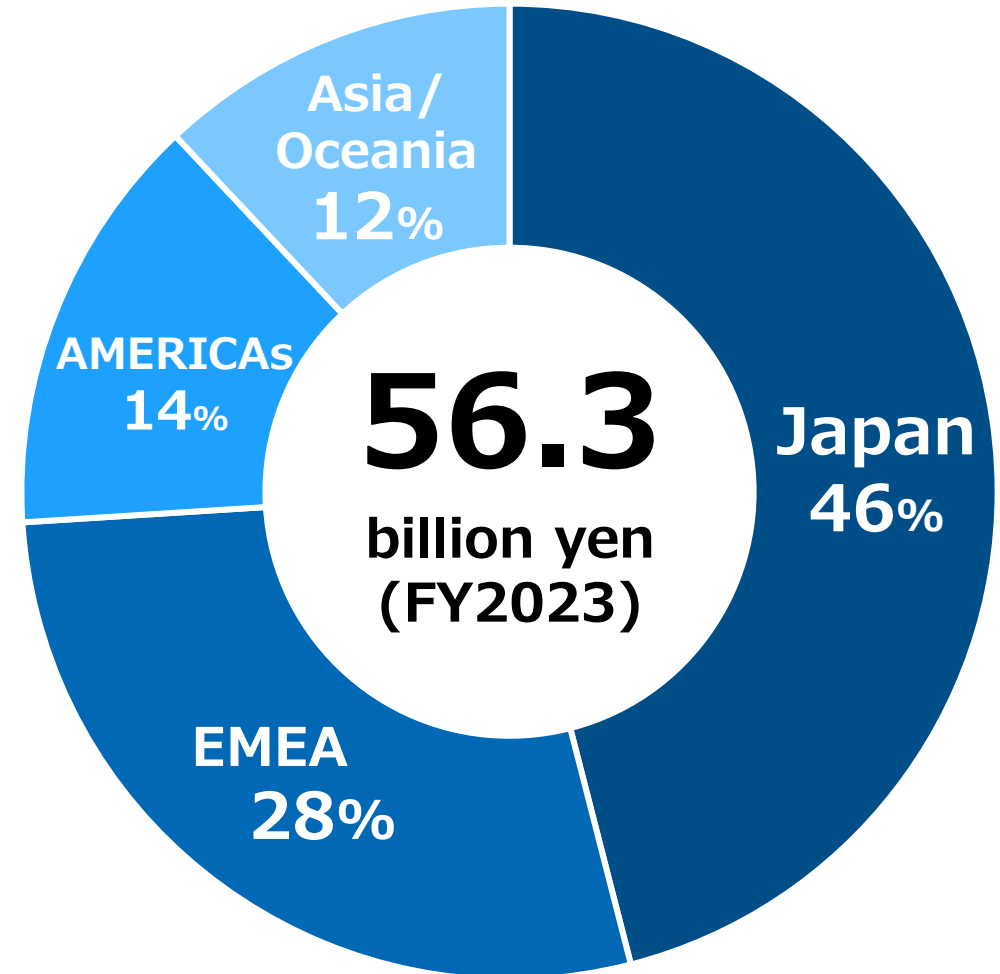
Management of outdoor activities and environmental learning programs

# 1. Company Overview \_ Data

## Sales by Product Category



## Sales by Region



# 1. Company Overview \_ Global Market Share

## Global niche No.1

Security sensors

40%

Outdoor Intrusion Detector



Sensor for large-scale critical facilities



Camera sensor

Automatic door sensors

30%

Automatic door sensor



Infrared sensor



Industrial door sensors

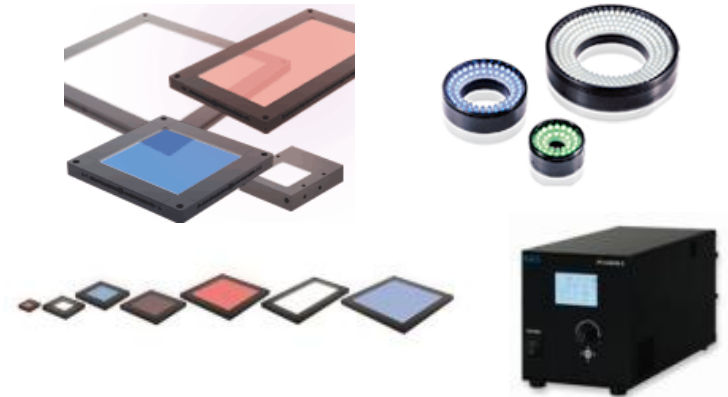


Push plate

Machine vision lighting

30%

LED inspection lighting



LED lighting systems for image inspection

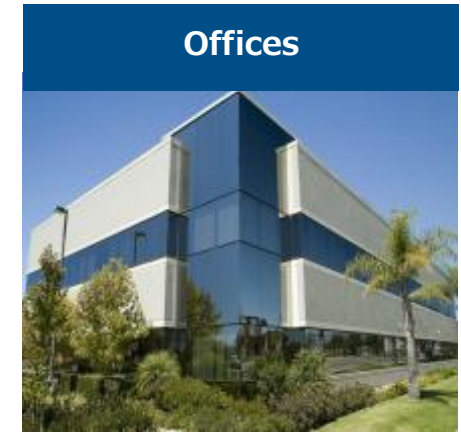
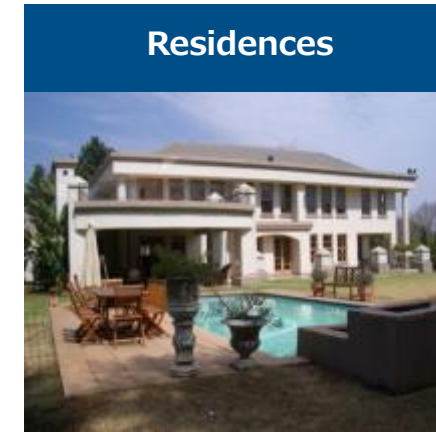
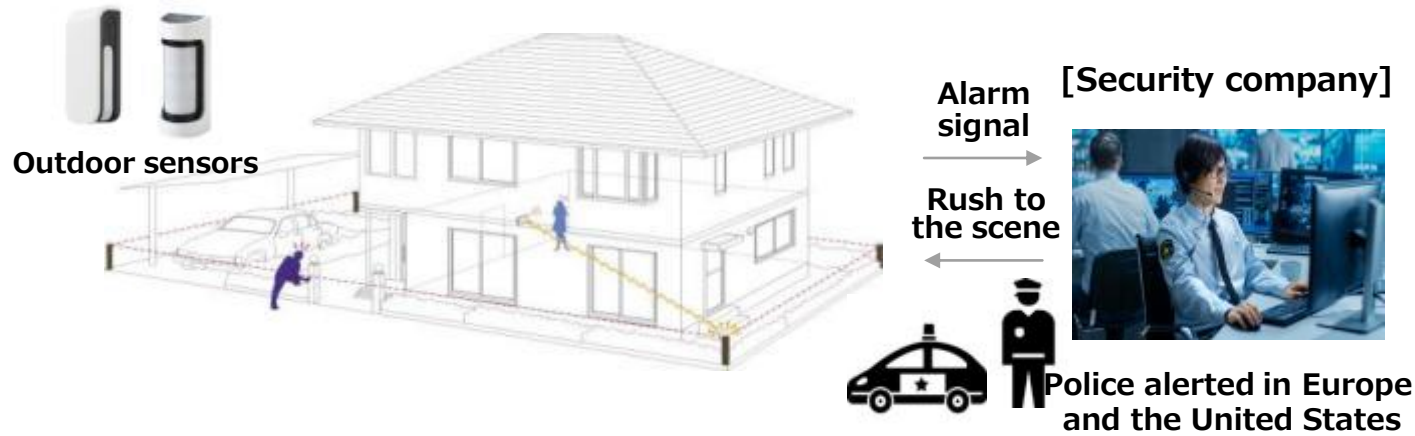


# 2. Business Domain

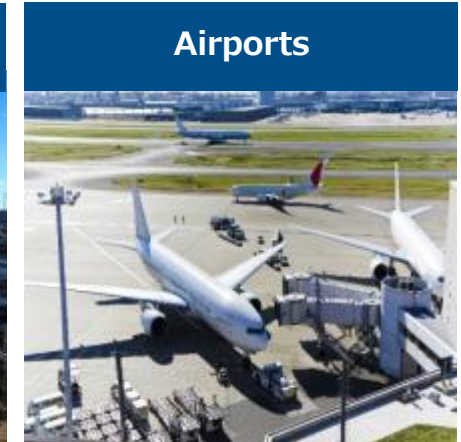
# 2. Business Domain \_ Security sensors

## Largest market share in the world for outdoor intrusion detectors

Residential home · Commercial facilities



Important facilities



## 2. Business Domain \_ Automatic door sensors

Domestic market share: Over 50%

Overseas market share: Over 20%

In 1980, we applied **far-infrared rays**, until then mainly used for military purposes, to automatic door sensors.



Mat switch (on the floor)



The world's first Automatic Door Sensor



Infrared sensor (overhead)



Shopping centers

Over 60% share of convenience stores

Hospitals

Shutter doors for factories and warehouses

Ensure the detection of forklifts

# 2. Business Domain \_ Factory Automation sensors



Provision of **sensors for factory automation** which help automate factory production processes and save labor

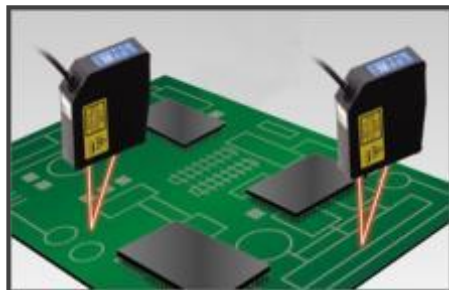
## Displacement sensors



Products for the semiconductor and electric and electronic parts industries



Measurement of smartphone frame height



Measurement of substrate tilt/warp

## Image sensors



Products for the three-item industries (food, pharmaceutical and cosmetic items)



Inspection of use-by dates printed on packages



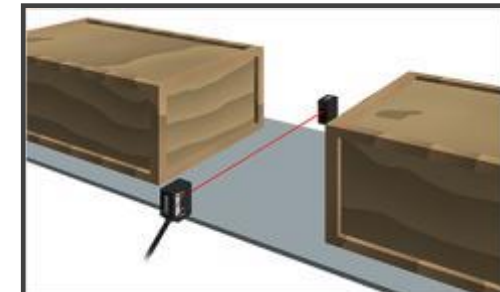
Inspection of use-by dates printed on milk cartons

© 2024 OPTEX GROUP CO., LTD.

## Photoelectric sensors



Products for the logistics industry



Detection of passing wooden boxes



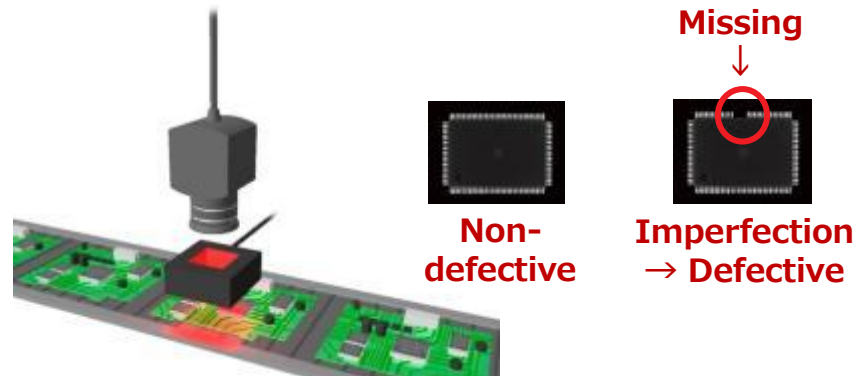
Detecting boxes protruding from shelves in automatic warehouses

# 2. Business Domain \_ Machine Vision Lighting

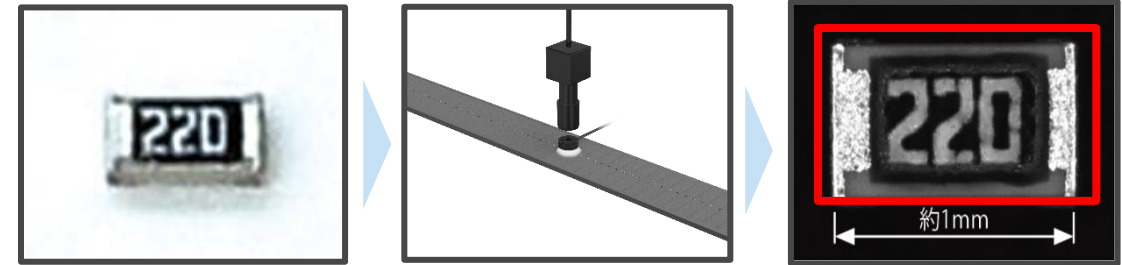
CCS produces **lighting for image inspection** using LED since 1993.

**Lighting for image inspections\***  
 When producing something at a plant, each stage of work **requires an "inspection" process.**

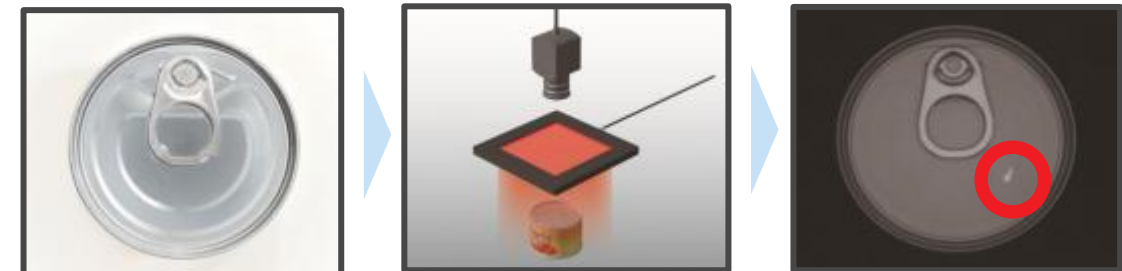
Photos or images of the inspection targets are taken and processed using lighting (and power supplies), lenses, and cameras, and the items are judged to be "good" or "defective".



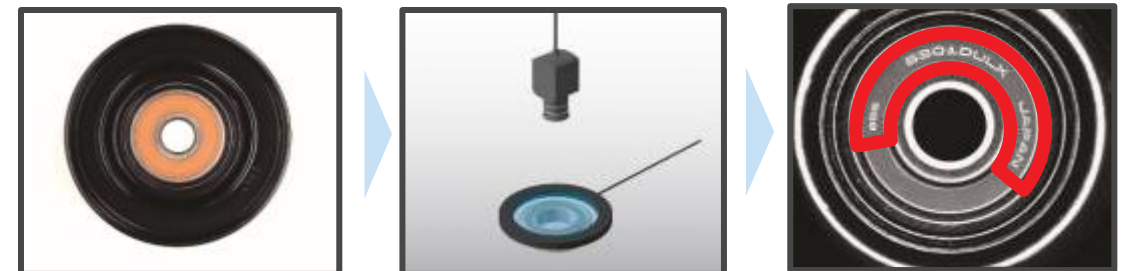
Inspection for defects in parts mounted on a printed circuit board



Letter/shape imaging (Small chip parts; about 1mm)



Imperfection imaging (surface of can)



Engraved letter imaging (bearing)

\*Lighting for image inspection is also called Machine Vision (MV) lighting.

## 2. Business Domain \_Industrial Computers

Provision of products that are highly reliable in terms of environmental durability, noise insulation, and other factors.

Our competitive edge is that we highlight long-term technical support services based on a wealth of expertise on the development of hardware and software

### Embedded Boards

Provision of computer platforms for equipment used for semiconductor manufacturing, medical services and communications



### Production and Infrastructure System

Provision of systems that solve issues related to production frontlines and social infrastructure



### Advanced Measurement/Control Systems

Provision of advanced system products, such as robots, for measurement and control operations



## 2. Business Domain \_Mechatronics

### Automation Systems

Boasting advanced mechatronics technology

- ✓ High-speed/high-precision filling technology
- ✓ High-speed material handling technology, etc.

→ High quality meeting exacting standards



Since its foundation, MITSUTEC has been manufacturing automation systems such as secondary battery manufacturing lines.

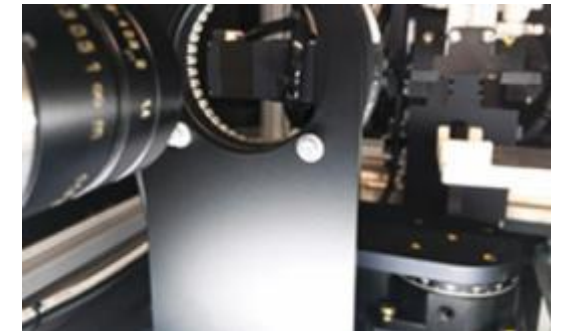
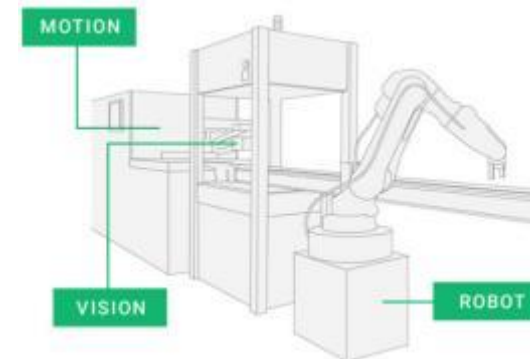
### Image Processing Inspection Systems

"Motion technology"  
to move things

×

"Vision technology"  
to see things

→ Providing optimum solutions



MITSUTEC builds an image processing inspection system that offers solutions to customer issues by combining cameras, LED lightings and measuring instruments, etc.



# 3. Sustainability



# 3. Sustainability

We are proactively addressing ESG issues to enhance our corporate value. See our ESG report.



## Environment

### Initiatives to tackle environmental issues

[Support for the TCFD Recommendations]  
The Company established a long-term goal of “Reducing CO2 emissions by no less than 30% by 2030 compared to the level of FY2019,” and has been pursuing measures according to the TCFD framework with a focus on the climate change response project.

[Contribution to the Reduction of CO2] Emissions through Products and Solutions and promote environmentally friendly products and solutions.

Automatic door sensors



Improve air conditioning efficiency by preventing the unnecessary opening and closing of doors.

Machine Vision Lighting



Feedback control that automatically adjusts brightness helps achieve energy conservation.



## Social

### Initiatives for social issues

Aiming to become the No. 1 self-realization company, the Company supports the growth of its employees, cultivates human resources to help them demonstrate their abilities, and improves the work environment.



OPTEX CO., LTD. and OPTEX FA CO., LTD. are recognized as companies committed to good health and productivity management and are certified as Health and Productivity Management Organizations in recognition of their efforts to increase health awareness, improve lifestyles and strengthen mental health measures.



## Governance

### Corporate governance initiatives

Four of the Directors and members of the Audit & Supervisory Committee, who account for one-half of the total (8), are Independent Outside Directors.

Experts (certified public accountants and lawyers) are appointed.

\*The number of the Directors and members of the Audit & Supervisory Committee is as of March 27, 2024.



Improving strategy quality by making decisions through active discussions held by the board of directors to further improve our corporate value.

<https://www.optexgroup.co.jp/en/>